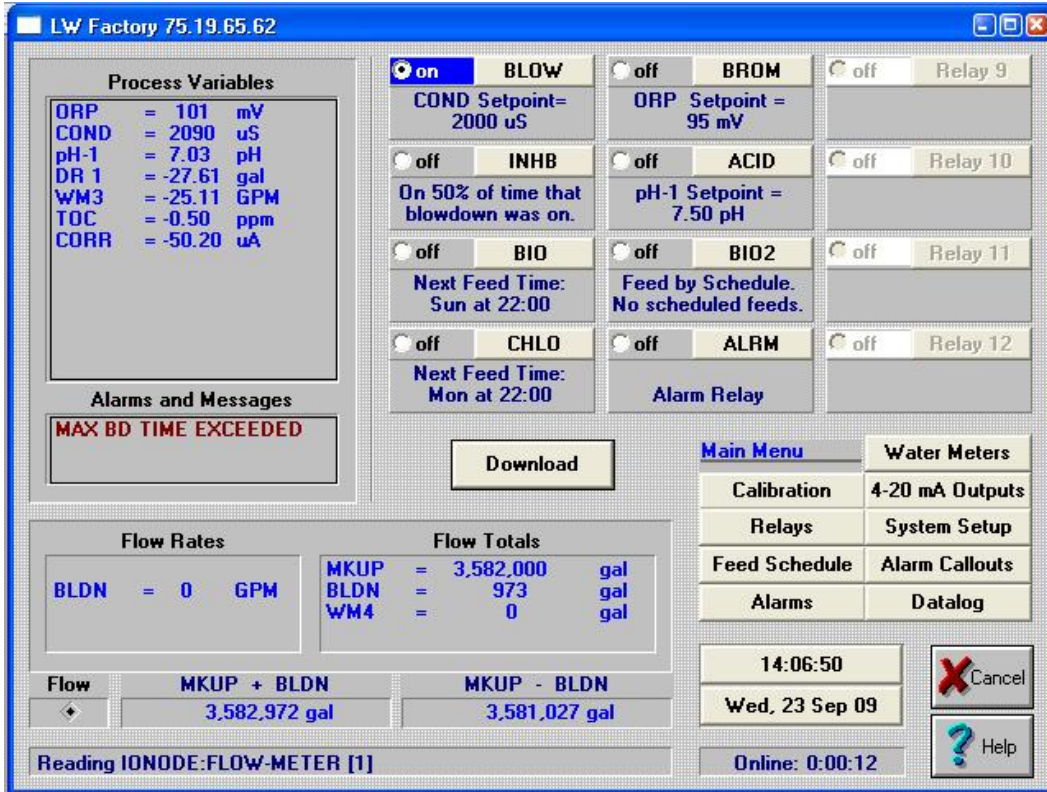


LAKWOOD REMOTE WINDOWS SOFTWARE (LRWS) FOR MODEL 2000 SERIES CONTROLLERS



LAKWOOD REMOTE

Lakewood Remote is a *Windows*-based program that accesses all the features of Lakewood 2000 Series controllers remotely. Communication is direct-connect via RS-232, remotely over phone lines with a modem, or over the internet or intranet with the use of the WEBNode. A user-selectable password is required to access any feature beyond viewing.

Lakewood Remote allows access to multiple controllers, phone numbers, addresses, and passwords. Using standard *Windows*-format mouse-click buttons, all features of the controller can be accessed. The datalog stored in the controller can be downloaded into a comma-delimited file. This can be used by *Lakewood Graph* or imported into other applications, such as spreadsheets.

LAKWOOD GRAPH

Lakewood Graph is a *Windows*-based program that takes delimited datalog files created by *Lakewood Remote* and plots the data on a time line.

SPECIFICATIONS

Platform required:

- 386 with 4M of RAM.
- Any machine that can run *Windows 3.1, 95, 98, NT, 2000, XP, VISTA*.
- 2M of hard drive space.
- Modem is optional.

Direct Connect RS-232:

- 1200, 2400, 4800, 9600 or 19200 baud.
- 8 data bits, 1 stop bit, NO parity.

Modem Requirements:

- Hayes AT command set
- 14,400 baud or higher.

Internet or Intranet Requirements:

- WEBNode
- IP protocol family and the Transmission Control Protocol (TCP).
- .netframework.

Datalog:

- 1 hour of 1 minute intervals.
- 28 days of hourly intervals.
- Both logs include process minimum, maximum, average pump run times and water meter totals.
- Minimum, maximum and average pump run times reset at the top of the hour.
- Downloaded by *Lakewood Remote* into a file of comma-delimited ASCII data that can be used by *Lakewood Graph* or imported into other applications, such as spreadsheets.

Security:

- View-only mode unless correct password is entered.
- 8-digit password can be changed only at the controller.